

Hidden Litter

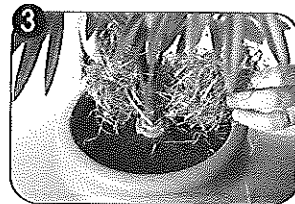
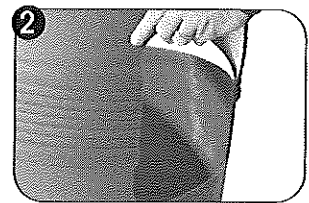
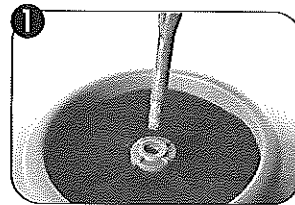
Litter Box

Instructions

Assembly

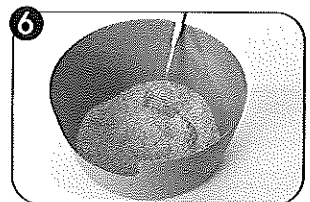
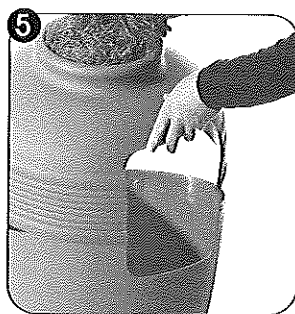
1. Push the plant firmly into the receptacle located on the top section of the planter litter box

Fill the base with your favorite litter to the manufacturer's recommended depth.
2. Attach the top to the base by lining up the entrance hole.
3. Place the filter around the base of the plant covering the vents and finish by covering the filter with the moss.
4. Arrange the plant to an attractive look.



Litter Cleaning

5. Remove the top section of the planter litter box and set it aside.
6. Clean the litter with a litter scoop or replace litter if necessary.
7. Replace the top of the litter box by lining up the entrance hole.



Cleaning of the box

The litter box can be cleaned using soap and water.

Care of leaves

Any unwanted creases on plant leaves can be removed by using a fabric steamer.

